



# Installation instructions for SPC

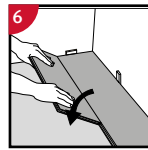
## Important information

- Packages must be acclimated a minimum of 24 to 48 hours prior to installation in the room where the installation will take place.
- In rooms larger than 10 x 10 m (100 m<sup>2</sup>), the flooring must be installed in smaller sections with expansion joints.
- The distance to walls and other permanent pieces of construction elements (such as pillars and kitchen islands) should be approximately 5 mm.
- Never install very heavy pieces of furniture such as kitchen islands/cabinets on top of the flooring.
- The indoor climate should have a temperature between 15-23°C and relative air humidity between 30-60% (according to Swedish Standards Institute).
- Always follow the floor manufacturers requirements and specifications regarding subfloor preparation.

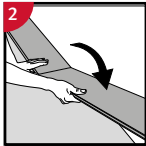
## General installation instructions



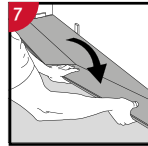
**1 First plank, first row**  
Place a spacer with predicted thickness to the left and position the panel against the wall.  
Later, after 3 rows, you can easily position the flooring against the front wall with predicted spacers.



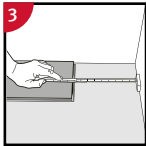
**6** Place the plank and angle against the plank in the previous row, press forward and fold down at the same time. Leave the plank in a somewhat up angled position when the planks start to lock. To make this further easier, a wedge with the suitable angle can be placed under the plank near the short side joint as support.



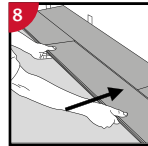
**2 Second plank, first row**  
Press the short end of the next plank at an angle to the first one, and then fold down.  
Complete the first row in the same way



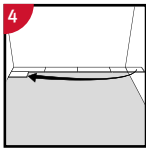
**7 Second plank, second row**  
Place the short end of the plank at an angle against the previous installed plank and fold down all the way.



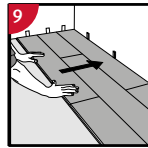
**3** At the end of the first row, put a spacer to the wall and measure the length of the last panel to fit.



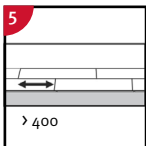
**8** Push to slide the plank against the row in front so it aligns with the first plank. Put it down like the first plank positioned tightly together. The first/previous plank can now be folded completely down to horizontal position and if a wedge is used it can be moved to the next short end joint.



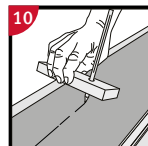
**4 Second row**  
First panel min length > 400 mm.  
Put a spacer against the left wall.



**9 After 2-3 rows.**  
Adjust the distance to the front wall by placing distances. Keep the distances in position during the entire time of installation and remove once the installation is completed.

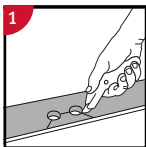


**5** Staggered joint distance i.e. minimum distance between short ends of panels in parallel rows shall not be less than the given length.



**10 Last row (and perhaps also first row).**  
Minimum width 50 mm. Place a spacer to the wall before measuring. Make a simple drawing tool (piece of wood with a hole) and mark the panel along the wall. Cut the panels lengthwise including the flexible tongues.

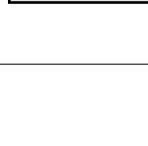
## Installation around radiator/heating pipes



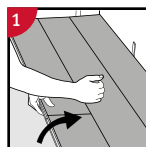
**1** Drill holes two times larger than the diameter of the pipes. Remove a piece of the panel with a utility knife. Put the panel on one side of the pipes and the removed piece on the other side.



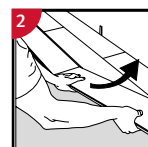
**1** Remove the vertical locking part of the strip with a chisel, put applicable glue on the strip and push the panels horizontally together. Place some spacers between last board and the wall.



## Dismantling panels



**1** Separate the whole row by carefully lifting up and release the whole row.  
Fold up the row and release the whole long side.



**2** Disassemble the panels by angling the short sides up vertically.